


# FISHWAY STATUS REPORT

**Date:** 6/20/2015  
**Inspection Period:** 6/14/2015 thru 6/20/2015

All JD Fishways are inspected twice per day during fish season, Mar. 1 - Nov. 30  
 Frequent monitoring of the PLC displays in SMF Fisheries Office as necessary.



**US Army Corps  
of Engineers**  
Portland District

**JOHN DAY DAM**  
 JD/WC Project-Fisheries  
 P.O. Box 823  
 Rufus, Oregon 97050  
 Phone: 541-506-7860

John Day Dam	Inspections	Criteria	Total Number of Inspections:	Temperature:
	Out of Criteria	Limit	14	66 F
<b>NORTH FISHWAY</b>			5 out of 6 AWS pumps available since 12/23/14	
Exit differential	0	≤ 0.5'		
Exit Control weirs	0	High setting	MID setting to stop/prevent the sockeye fallback since 6/10, PM	
Count station differential	0	≤ 0.3'		
Weir crest depth (DS gauge)	0	1.3' ± 0.1'	1.3' for shad passage since 5/27	
Entrance differential	0	1.0' - 2.0'	AVG 1.5	
<b>SOUTH FISHWAY</b>			3 AWS Turbines in regular service since 2/28/15	
Exit differential	0	≤ 0.5'		
Exit Control weirs	0	Mid Setting	Mid setting is normal for JDS	
Count station differential	0	≤ 0.3'		
Weir crest depth (US gauge)	0	1.3' ± 0.1'	1.3' for shad passage since 5/26	
South entrance differential	0	1.0' - 2.0'	AVG 1.6	
Entrance weir SE1	0	depth (≥ 8')	AVG 9.3	
Collection channel velocity	0	1.5 - 4 fps	AVG 3.35	
N. Entrance PH(Bay 19)differential	0	1.0' - 2.0'	AVG 1.5	
Entrance weir NE1	0	depth (≥ 8')	AVG 8.6	
Entrance weir NE2	0	depth (≥ 8')	AVG 8.6	
<b>JUVENILE PASSAGE</b>			Elevated smolt mortalities in daily sampling by PSMFC since 6/7; slight at first, variable/increasing	
Forebay/bypass conduit differential	0	4.0' - 5.0'	AVG 4.6	CC level sensor found failed on 6/12. New sensor installed on 6/15.
Submersible traveling screens	0	visual inspect		
Turbine trashrack drawdown	0	<1.5', wkly	STS inspection completed by 6/18; four STSs with bad mesh were repaired/replaced with spares	
Vert barrier screen drawdown	0	<1.5', wkly	MU intake trashracks' raking is scheduled for the next week	
Spill volume	0	30/40 %	Fish spill and TSWs' operation continues since 4/10/15 per FOP	
Spill pattern	0	per FPP	Per 2015 FOP	
Turbine Unit Priority	0	per FPP		
Turbine 1% Efficiency	0	per FPP		

## SMOLT MONITORING FACILITY

### Operation:

SMF in sampling mode since 3/31 AM. 24 hrs/ 7 days a week sampling by PSMFC as required by FPP.

JD Fisheries crew continues 24/7 swing shift schedule as required by FPP; it will continue this until the end of sampling season on 9/15.

Elevated smolt mortalities in daily sampling by PSMFC since 6/7. Minor at first, at 1.1 %, variable and reaching high of 4.7% on 6/17, for unknown reason.

No obvious deficiency at JD JBS / SMF so could the high river water temps be a factor responsible for the current, elevated sampling morts ?

Debris load: very little debris.

### Maintenance:

All devices working well without any issues at this time

### Research:

None

**Fallbacks:**           AVG:   52                   MAX:   92                   MIN:   35

## OTHER JOHN DAY ISSUES:

### Birds :

see the Avian Numbers tab. We report all species and locations, but in reality only gulls in the tailrace BRZ are relevant at JD.

USADA avian hazing from a boat began 4/16. Typical hazing shifts are 06:00 - 14:30

Spillway Avian Line # 60 failed/ snapped on 6/15. There are 4 JD avian lines missing with 121 lines remaining. Planning to replace in September/October.

Avian predation continues minimal/ insignificant.

### Operations:

JD North Fishway in regular service; 5 out of 6 AWS pumps are available. Repair work on pump 4 continues; pump 3 has vibration issues and should be the last last in service.

JBS in regular service since 3/27. CC level sensor found failed on 6/12 & Tainter Gate was put in Manual mode over the weekend with JD Fisheries making appropriate adjustments. New sensor was installed / calibrated on 6/15, Monday and Tainter Gate returned to Auto mode on 6/16 AM.

JD South Fishway in regular service with 3 AWS Turbines; it is meeting the optimal FPP criteria.

MU Gatewell Drawdowns: Differentials are checked Wednesdays and Sundays; all gatewells were in criteria.

### Maintenance:

JD North AWS pumps: five out of total six are available. Repair of AWS pump # 4 by a contractor started on 1/26 & is ongoing.

Calibration: All gauges/ sensors are within the criteria of 0.3' .

### Research:

2015 Adult Fish Counting by Normandeau Associates commenced on 1 April, 2015 and will continue daily through 1 November.

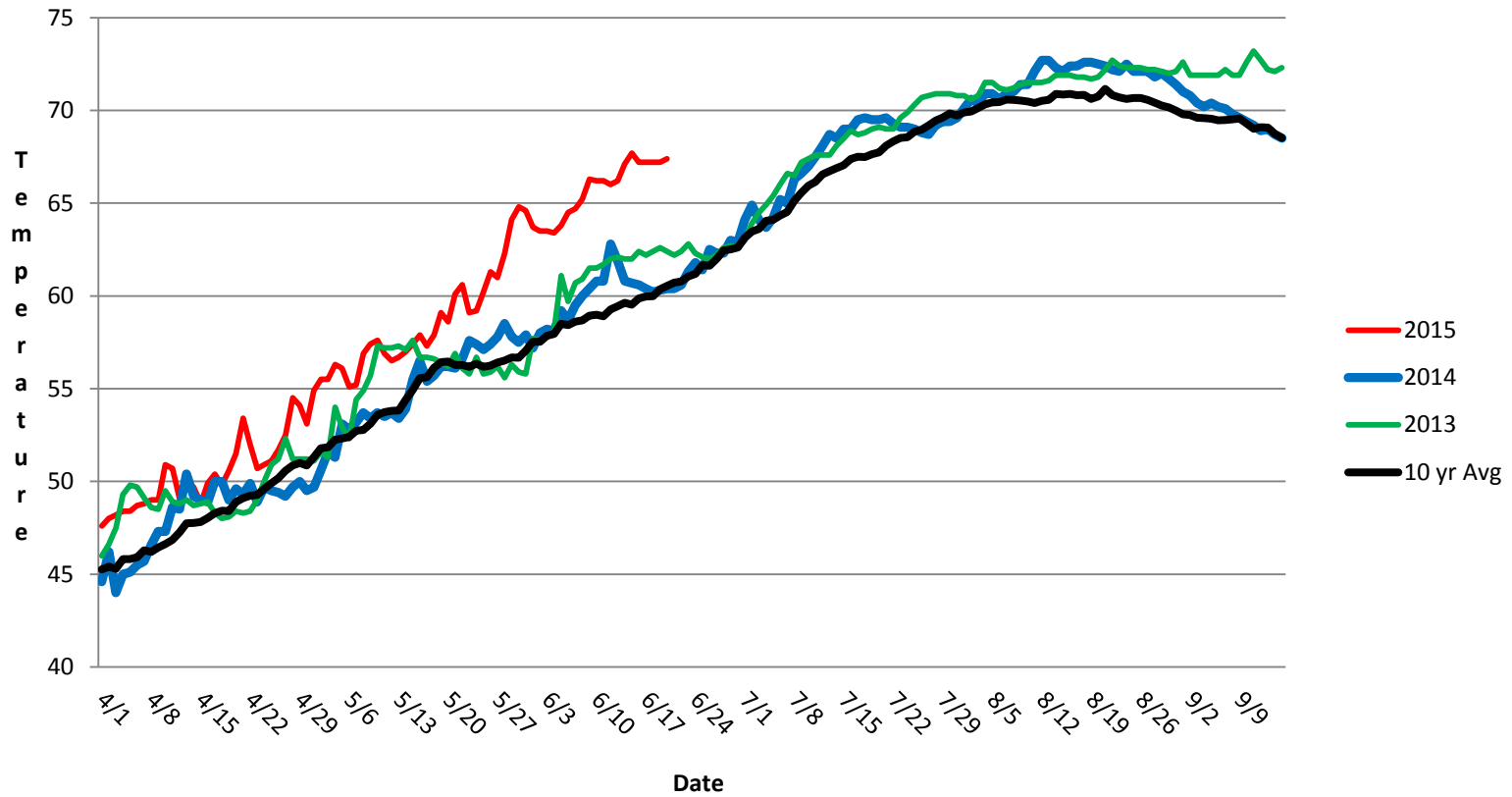
Lamprey trapping and collection of adults & juveniles for various tribal and non-tribal studies are currently coordinated by JD Fisheries. Expected to commence in late June.

Dam angling to remove NPM from JD PH tailrace, by a crew from Washington F&W underway. 281 NPM caught the last week with 1,698 season total as of 6/20.

Proposal by PSMFC to install Adult PIT antennas at both JD Fishways is pending; possible installation during the next winter maintenance season 2015/16.

JD North LPS monitoring by FFU crew continues. Adult lamprey numbers are increasing from ~1/day on average - ~10/day on average

### JDA SMF Water Temp



## JDA Collection Channel Velocity

Date: 4-Jun-15

By: MDL

Bay(s)	Time	Sec.	Velocity (f/s)
0-2	1:21	82	2.20
2 - 4	2:09	129	3.83
4 - 6	3:06	181	3.46
6 - 8	3:50	238	3.16
8 - 10	4:45	295	3.16
10 - 12	5:39	351	3.21
12 - 14	6:45	408	3.16
14 - 16	7:33	461	3.40
16 - 18	8:15	500	4.62
			<b>3.35</b>

**JDA Bird Counts: 6/14/15 to 6/20/15**

F(1): Forage AM survey F(2): Forage PM Survey NF(1): Non-Forage AM Survey NF(2): Non-Forage PM Survey

Date	Zone	Gulls				Cormorant				Caspian tern				White Pelican				Grebe				Total
		F(1)	F(2)	NF(1)	NF(2)	F(1)	F(2)	NF(1)	NF(2)	F(1)	F(2)	NF(1)	NF(2)	F(1)	F(2)	NF(1)	NF(2)	F(1)	F(2)	NF(1)	NF(2)	
14-Jun	PHFB	1	7	0	0	0	0	0	0	0	0	0	0	0	0	0	0	0	0	0	0	8
14-Jun	SWFB	0	0	0	0	0	0	0	0	0	0	0	0	0	0	0	0	0	0	3	0	3
14-Jun	PH1	10	2	0	0	0	0	0	0	0	0	0	0	0	0	0	0	0	0	0	0	12
14-Jun	PH2	4	2	0	0	0	0	0	0	0	0	0	0	0	0	0	0	0	0	0	0	6
14-Jun	PH3	7	7	0	0	0	0	0	0	0	0	0	0	1	1	0	0	0	0	0	0	16
14-Jun	SW1	0	0	0	0	0	0	0	0	0	0	0	0	0	0	0	0	0	0	0	0	0
14-Jun	SW2	0	0	0	0	0	0	0	0	0	0	0	0	0	0	0	0	0	0	0	0	0
14-Jun	SW3	0	3	0	0	0	0	0	0	0	0	0	0	7	0	0	0	0	0	0	0	10
Avg/Survey		22		0		0		0		0		0		5		0		0		2		55
15-Jun	PHFB	2	0	0	0	0	0	0	0	0	0	0	0	0	0	0	0	2	0	0	0	4
15-Jun	SWFB	0	0	0	0	0	0	0	0	0	0	0	0	0	0	0	0	0	0	0	0	0
15-Jun	PH1	8	0	0	0	0	0	0	0	0	0	0	0	0	0	0	0	0	0	0	0	8
15-Jun	PH2	4	14	0	0	0	0	0	0	0	0	0	0	0	0	0	0	0	0	0	0	18
15-Jun	PH3	0	1	0	0	0	0	0	0	0	0	0	0	0	0	0	0	0	0	0	0	1
15-Jun	SW1	0	0	0	0	0	0	0	0	0	0	0	0	0	0	0	0	0	0	0	0	0
15-Jun	SW2	0	0	0	0	0	0	0	0	0	0	0	0	0	0	0	0	0	0	0	0	0
15-Jun	SW3	0	0	0	0	0	0	0	0	0	0	0	0	3	0	0	0	0	0	0	2	5
Avg/Survey		15		0		0		0		0		0		2		0		1		1		36
16-Jun	PHFB	1	7	0	0	0	0	0	0	0	0	0	0	1	0	0	0	0	1	0	0	10
16-Jun	SWFB	0	0	0	0	0	0	0	0	0	0	0	0	0	0	0	0	0	0	0	0	0
16-Jun	PH1	0	0	0	0	0	0	0	0	0	0	0	0	0	0	0	0	0	0	0	0	0
16-Jun	PH2	7	0	0	0	0	0	0	0	0	0	0	0	0	0	0	0	0	0	0	0	7
16-Jun	PH3	2	0	0	0	0	0	0	0	0	0	0	0	0	0	0	0	0	0	0	0	2
16-Jun	SW1	0	0	0	0	0	0	0	0	0	0	0	0	0	0	0	0	0	0	0	0	0
16-Jun	SW2	0	0	0	0	0	0	0	0	0	0	0	0	0	0	0	0	0	0	0	0	0
16-Jun	SW3	0	0	0	0	0	0	0	0	0	0	0	0	0	0	4	0	0	0	0	0	4
Avg/Survey		9		0		0		0		0		0		1		2		1		0		23
17-Jun	PHFB	0	0	2	0	0	0	0	0	0	0	0	0	0	0	0	0	0	0	0	1	3
17-Jun	SWFB	0	0	0	0	0	0	0	0	0	0	0	0	0	0	0	0	0	0	0	0	0
17-Jun	PH1	0	0	0	0	0	0	0	0	0	0	0	0	0	0	0	0	0	0	0	0	0
17-Jun	PH2	1	3	0	0	0	0	0	0	0	0	0	0	0	0	0	0	0	0	0	0	4
17-Jun	PH3	0	1	0	0	0	0	0	0	0	0	0	0	0	0	0	0	0	0	0	0	1
17-Jun	SW1	1	0	0	0	0	0	0	0	0	0	0	0	0	0	0	0	0	0	0	0	1
17-Jun	SW2	0	0	0	0	0	0	0	0	0	0	0	0	0	0	0	0	0	0	0	0	0
17-Jun	SW3	0	9	0	0	0	0	0	0	0	0	0	0	0	0	7	0	0	0	0	0	16
Avg/Survey		8		1		0		0		0		0		0		4		0		1		25

**JDA Bird Counts: 6/14/15 to 6/20/15**

F(1): Forage AM survey F(2): Forage PM Survey NF(1): Non-Forage AM Survey NF(2): Non-Forage PM Survey

Date	Zone	Gulls				Cormorant				Caspian tern				White Pelican				Grebe				Total
		F(1)	F(2)	NF(1)	NF(2)	F(1)	F(2)	NF(1)	NF(2)	F(1)	F(2)	NF(1)	NF(2)	F(1)	F(2)	NF(1)	NF(2)	F(1)	F(2)	NF(1)	NF(2)	
18-Jun	PHFB	0	0	0	0	0	0	0	0	0	0	0	0	0	0	0	0	0	0	0	1	19
18-Jun	SWFB	0	0	0	0	0	0	0	0	0	0	0	0	0	0	0	0	0	0	0	2	
18-Jun	PH1	0	0	0	0	0	0	0	0	0	0	0	0	0	0	0	0	0	0	0	0	
18-Jun	PH2	3	6	0	0	0	0	0	0	0	0	0	0	0	0	0	0	0	0	0	0	
18-Jun	PH3	0	1	0	0	0	0	0	0	0	0	0	0	0	0	0	0	0	0	0	0	
18-Jun	SW1	0	0	0	0	0	0	0	0	0	0	0	0	0	0	0	0	0	0	0	0	
18-Jun	SW2	0	0	0	0	0	0	0	0	0	0	0	0	0	0	0	0	0	0	0	0	
18-Jun	SW3	2	4	0	0	0	0	0	0	0	0	0	0	0	0	0	0	0	0	0	0	
<b>Avg/Survey</b>		<b>8</b>	<b>0</b>	<b>0</b>	<b>0</b>	<b>0</b>	<b>0</b>	<b>0</b>	<b>0</b>	<b>0</b>	<b>0</b>	<b>0</b>	<b>0</b>	<b>0</b>	<b>0</b>	<b>0</b>	<b>0</b>	<b>2</b>	<b>0</b>	<b>0</b>	<b>2</b>	<b>19</b>
19-Jun	PHFB	0	0	0	0	0	0	0	0	0	0	0	0	0	0	0	0	0	0	0	1	19
19-Jun	SWFB	0	0	0	0	0	0	0	0	0	0	0	0	0	0	0	0	0	0	0	0	
19-Jun	PH1	0	0	0	0	0	0	0	0	0	0	0	0	0	0	0	0	0	0	0	0	
19-Jun	PH2	0	2	0	0	0	0	0	0	0	0	0	0	0	1	0	0	0	0	0	0	
19-Jun	PH3	0	0	0	0	0	0	0	0	0	0	0	0	2	0	0	0	0	0	0	0	
19-Jun	SW1	0	0	0	0	0	0	0	0	0	0	0	0	0	0	0	0	0	0	0	0	
19-Jun	SW2	0	0	0	0	0	0	0	0	0	0	0	0	0	0	0	0	0	0	0	0	
19-Jun	SW3	2	9	0	0	0	0	0	0	0	0	0	0	2	0	0	0	0	0	0	0	
<b>Avg/Survey</b>		<b>7</b>	<b>0</b>	<b>0</b>	<b>0</b>	<b>0</b>	<b>0</b>	<b>0</b>	<b>0</b>	<b>3</b>	<b>0</b>	<b>0</b>	<b>3</b>	<b>0</b>	<b>0</b>	<b>0</b>	<b>0</b>	<b>1</b>	<b>0</b>	<b>0</b>	<b>1</b>	<b>19</b>
20-Jun	PHFB	0	0	0	3	0	0	0	0	0	0	0	0	0	0	4	0	0	0	0	3	39
20-Jun	SWFB	0	0	0	0	0	0	0	0	0	0	0	0	0	0	0	0	0	0	0	0	
20-Jun	PH1	0	3	0	0	0	0	0	0	0	0	0	0	3	1	0	0	0	0	0	0	
20-Jun	PH2	4	5	0	0	0	0	0	0	0	0	0	0	1	0	0	0	0	0	0	0	
20-Jun	PH3	0	0	0	0	0	0	0	0	0	0	0	0	1	0	0	0	0	0	0	0	
20-Jun	SW1	0	0	0	0	0	0	0	0	0	0	0	0	0	0	0	0	0	0	0	0	
20-Jun	SW2	2	0	0	0	0	0	0	0	0	0	0	0	0	2	0	0	0	0	0	0	
20-Jun	SW3	0	0	0	0	0	0	0	0	0	0	0	0	3	4	0	0	0	0	0	0	
<b>Avg/Survey</b>		<b>7</b>	<b>2</b>	<b>0</b>	<b>0</b>	<b>0</b>	<b>0</b>	<b>0</b>	<b>0</b>	<b>8</b>	<b>2</b>	<b>0</b>	<b>8</b>	<b>2</b>	<b>0</b>	<b>0</b>	<b>0</b>	<b>2</b>	<b>0</b>	<b>0</b>	<b>2</b>	<b>39</b>
Totals	Gulls				Cormorant				Caspian tern				White Pelican				Grebe				Total	
	F	F	NF	NF	F	F	NF	NF	F	F	NF	NF	F	F	NF	NF	F	F	NF	NF		
<b>Weekly Total</b>	<b>147</b>	<b>5</b>	<b>0</b>	<b>0</b>	<b>0</b>	<b>0</b>	<b>0</b>	<b>0</b>	<b>0</b>	<b>0</b>	<b>0</b>	<b>0</b>	<b>33</b>	<b>15</b>	<b>3</b>	<b>13</b>	<b>3</b>	<b>13</b>	<b>3</b>	<b>13</b>	<b>216</b>	
<b>Avg/Survey</b>	<b>11</b>	<b>0</b>	<b>0</b>	<b>0</b>	<b>0</b>	<b>0</b>	<b>0</b>	<b>0</b>	<b>0</b>	<b>0</b>	<b>0</b>	<b>0</b>	<b>2</b>	<b>1</b>	<b>0</b>	<b>1</b>	<b>0</b>	<b>0</b>	<b>0</b>	<b>1</b>	<b>15</b>	

John Day Dam  
Avian Zones



## John Day Weekly Averages

	Temp:	Secchi:	Fallbacks
Sun	66	6.0	41
Mon	65	6.0	35
Tues	65	6.0	54
Wed	65	6.0	92
Thur	66	6.0	52
Fri	66	6.0	43
Sat	66	6.0	44
<b>AVG:</b>	<b>66</b>	<b>AVG: 6.0</b>	<b>AVG 52</b>
			<b>MAX 92</b>
			<b>MIN 35</b>

	NE1	NE2	S.Ent	SE1	N.Ent	JBS Diff	Bay19
Sun	8.6	8.6	1.6	8.9	1.5	4.6	1.5
Sun	9.0	9.0	1.4	9.4	1.5	4.4	1.4
Mon	9.3	9.3	1.6	9.5	1.4	4.6	1.4
Mon	8.5	8.5	1.6	9.8	1.5	4.7	1.6
Tues	8.7	8.7	1.6	9.1	1.5	4.6	1.5
Tues	8.3	8.3	1.4	10.0	1.3	4.5	1.6
Wed	8.8	8.7	1.6	9.0	1.6	4.8	1.5
Wed	8.8	8.6	1.5	9.1	1.6	4.6	1.4
Thur	8.5	8.4	1.8	8.7	1.5	4.6	1.5
Thur	8.2	8.4	1.6	9.1	1.5	4.6	1.4
Fri	8.6	8.8	1.6	9.4	1.5	4.5	1.4
Fri	8.3	8.5	1.5	9.5	1.5	4.5	1.6
Sat	8.3	8.4	1.5	9.5	1.6	4.6	1.4
Sat	8.2	8.3	1.7	9.3	1.6	4.6	1.5
<b>AVG:</b>	<b>8.6</b>	<b>8.6</b>	<b>1.6</b>	<b>9.3</b>	<b>1.5</b>	<b>4.6</b>	<b>1.5</b>